

2020 NORTH AUSTRALIA **SAVANNA FIRE FORUM**

NAFI — future directions to support decision making

Peter Jacklyn, Charles Darwin University

The NAFI Approach

NAFI NORTH AUSTRALIA & RANGELANDS FIRE INFORMATION

Disclaimer Charles Darwin University Supporters

Fire MapsTrack FiresFire HistoryDownload DataCreate ReportMore ToolsHelp

< HIDE MENU

Areas?

Presets Areas

- Cape York Pen'sla
- North East Qld
- The Gulf Qld
- Central Qld
- Central West Qld
- West Qld
- South Qld
- NT North
- NT Central
- NT South
- South Aust
- WA Kimberley
- WA Pilbara
- WA Desert
- WA Gascoyne
- WA South

My Areas+

Go to Location?

Upload Boundary?

Hotspot Alert?

NAFI

To view a fire map:
Select your region in the left menu
or click on the map below.



 **Latest Cloud Conditions**
Click on map to see fires in that region

What's new?

Help

Information Hub

NAFI on Google Earth

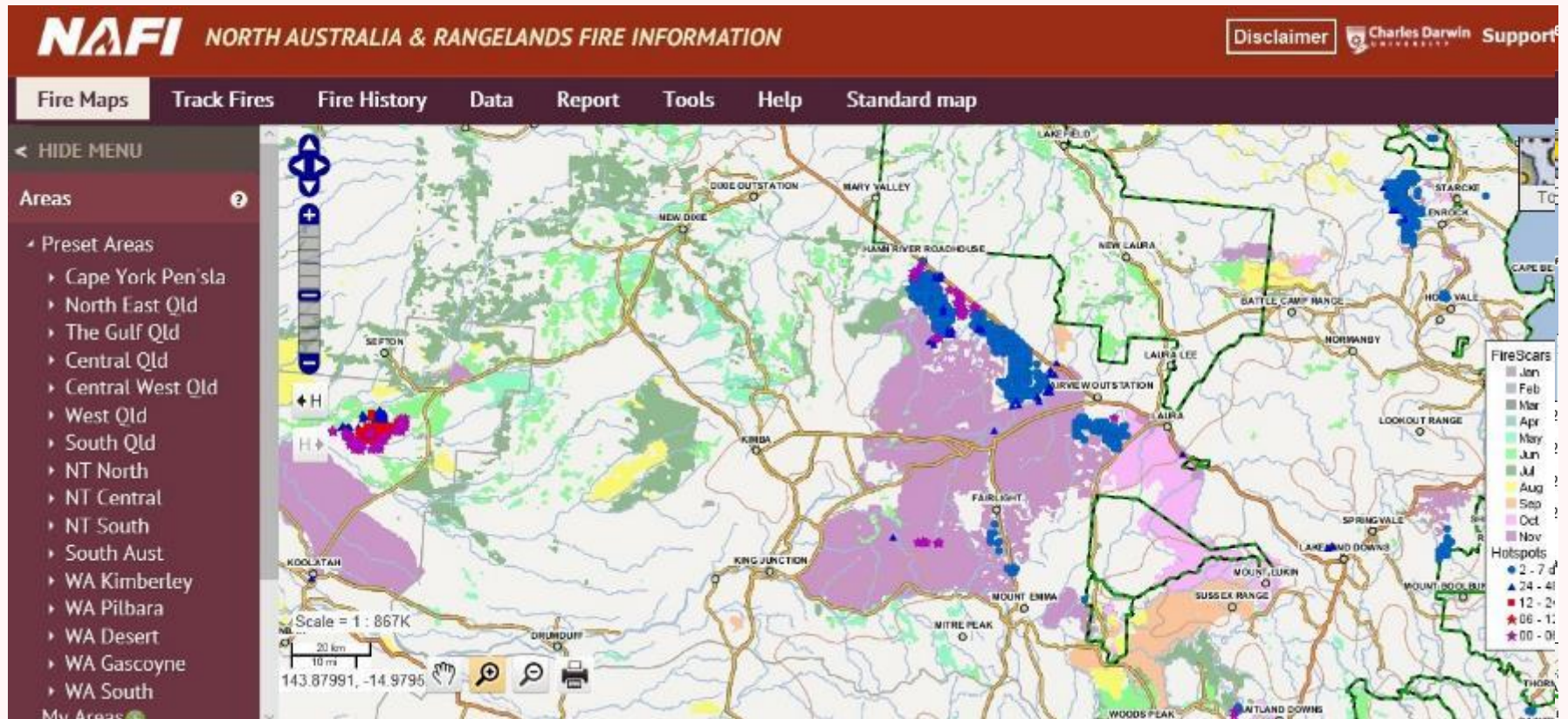
Back-up website

Contact us

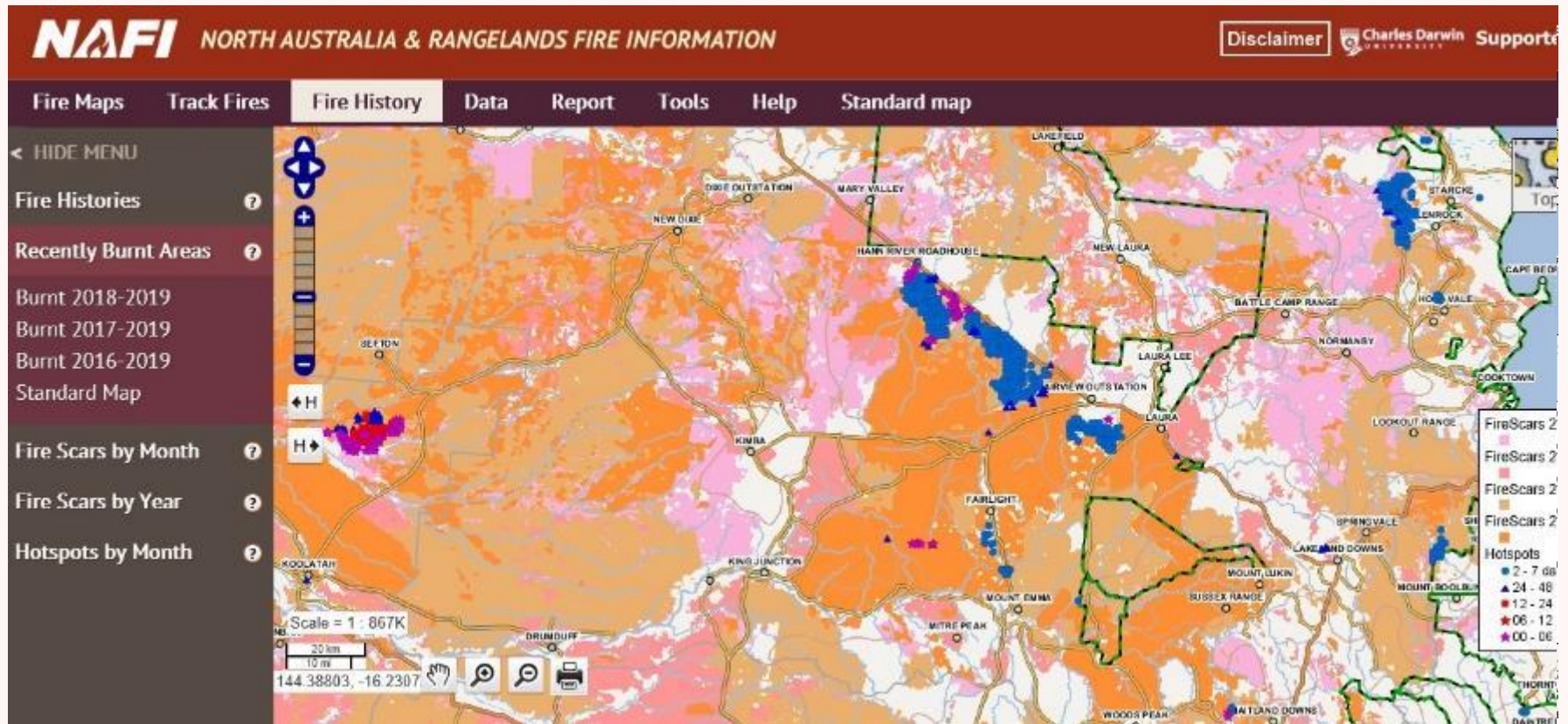
Read this first

- Hotspot location on any map is only accurate to within 1.5 km
- The hotspot symbol on the maps does not indicate the size of the fire
- Some fires may be small, brief, or obscured by smoke or cloud and go undetected
- Satellites detect other heat sources such as smokestacks

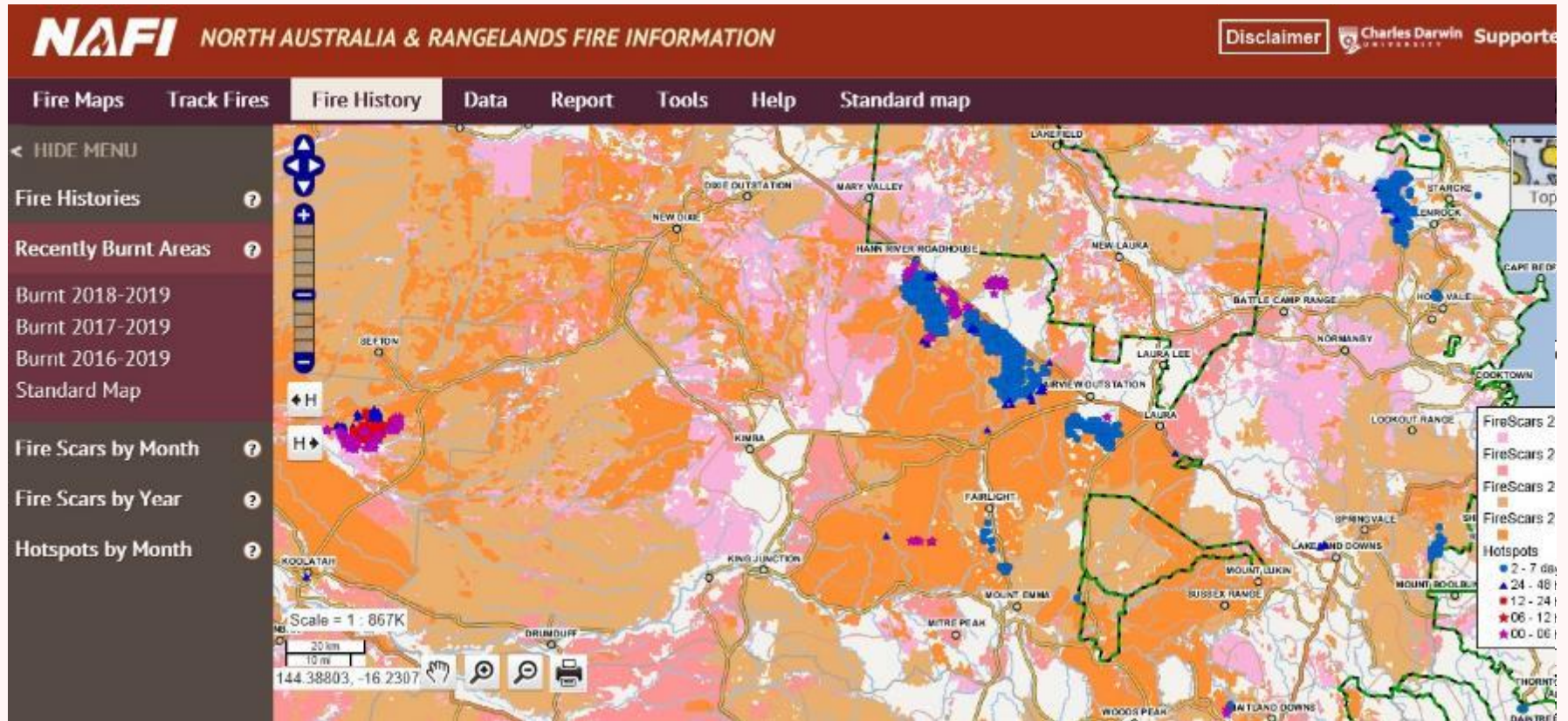
The NAFI Approach



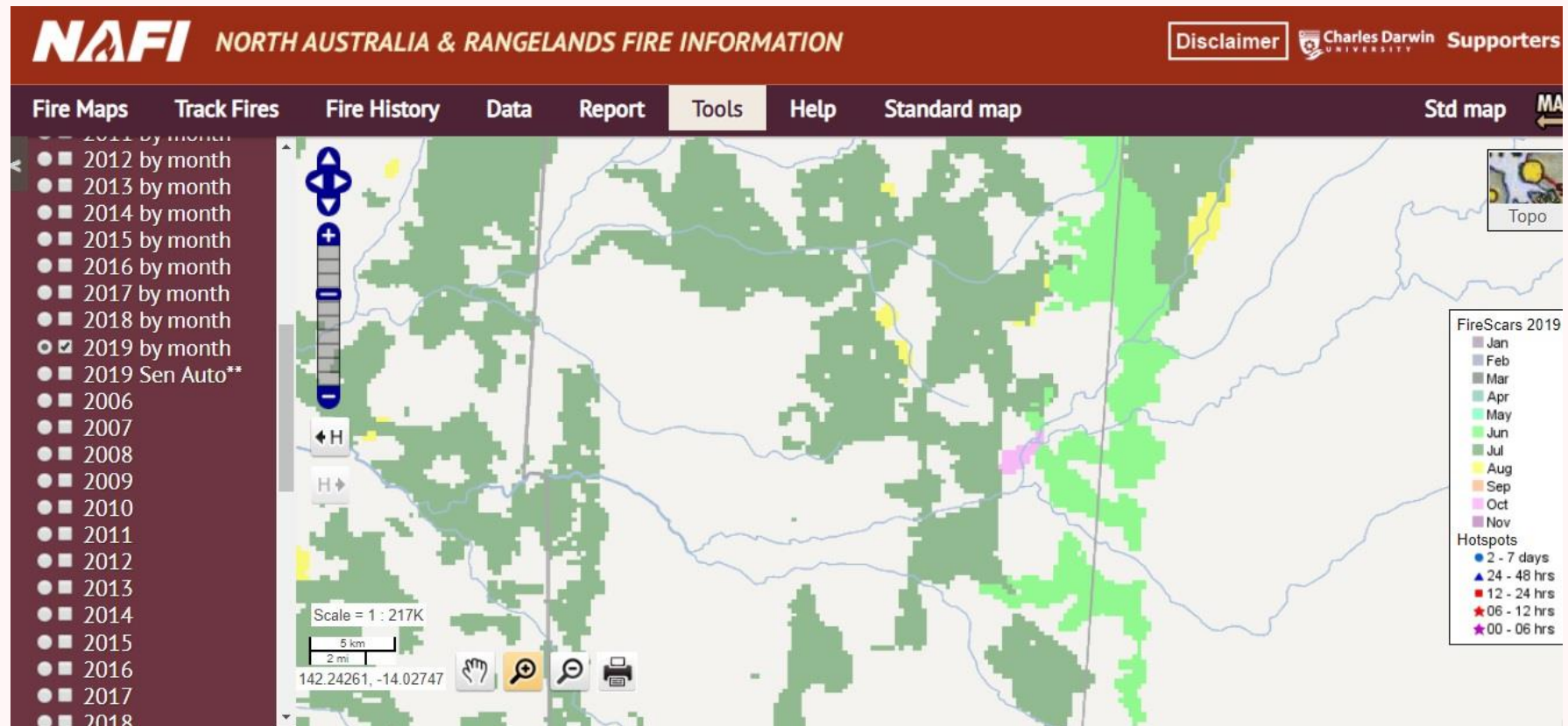
The NAFI Approach



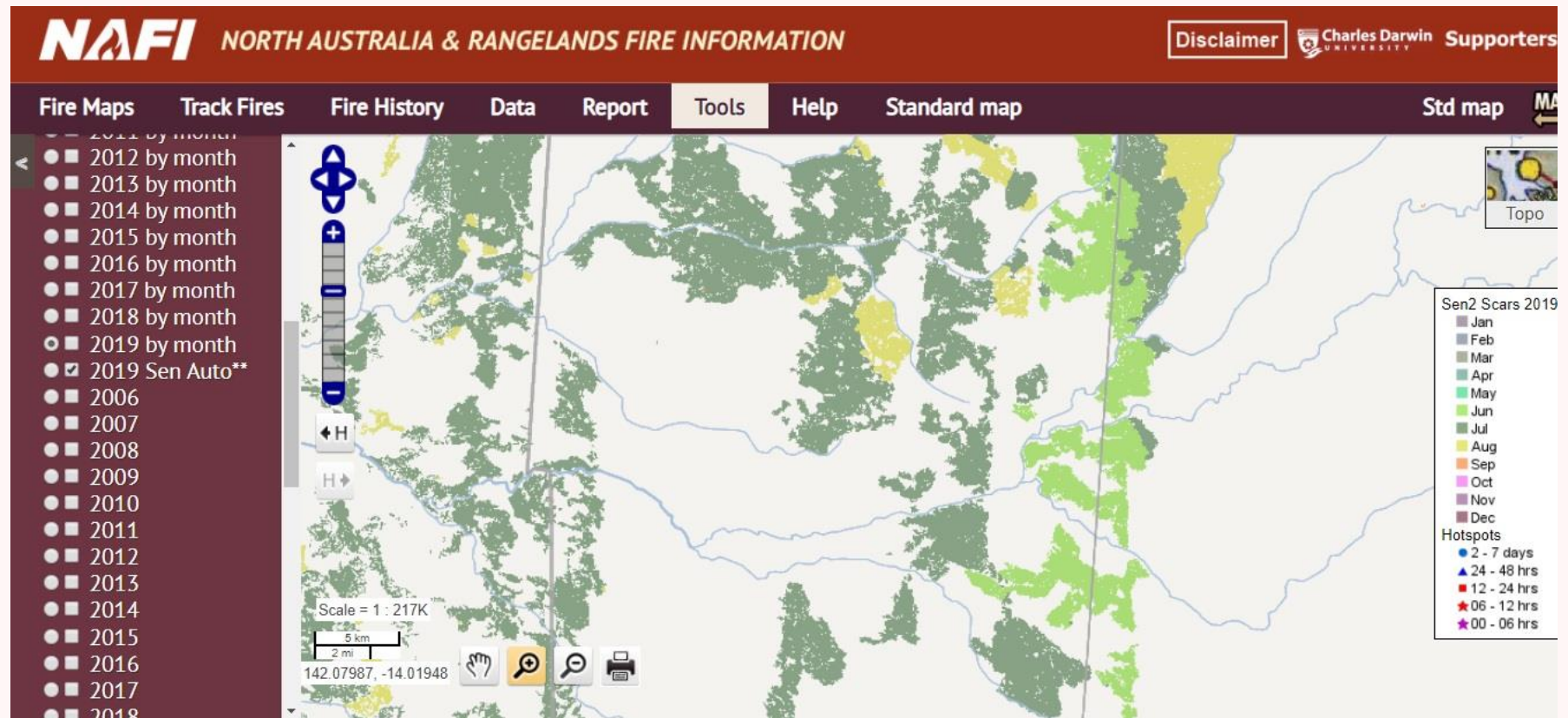
The NAFI Approach



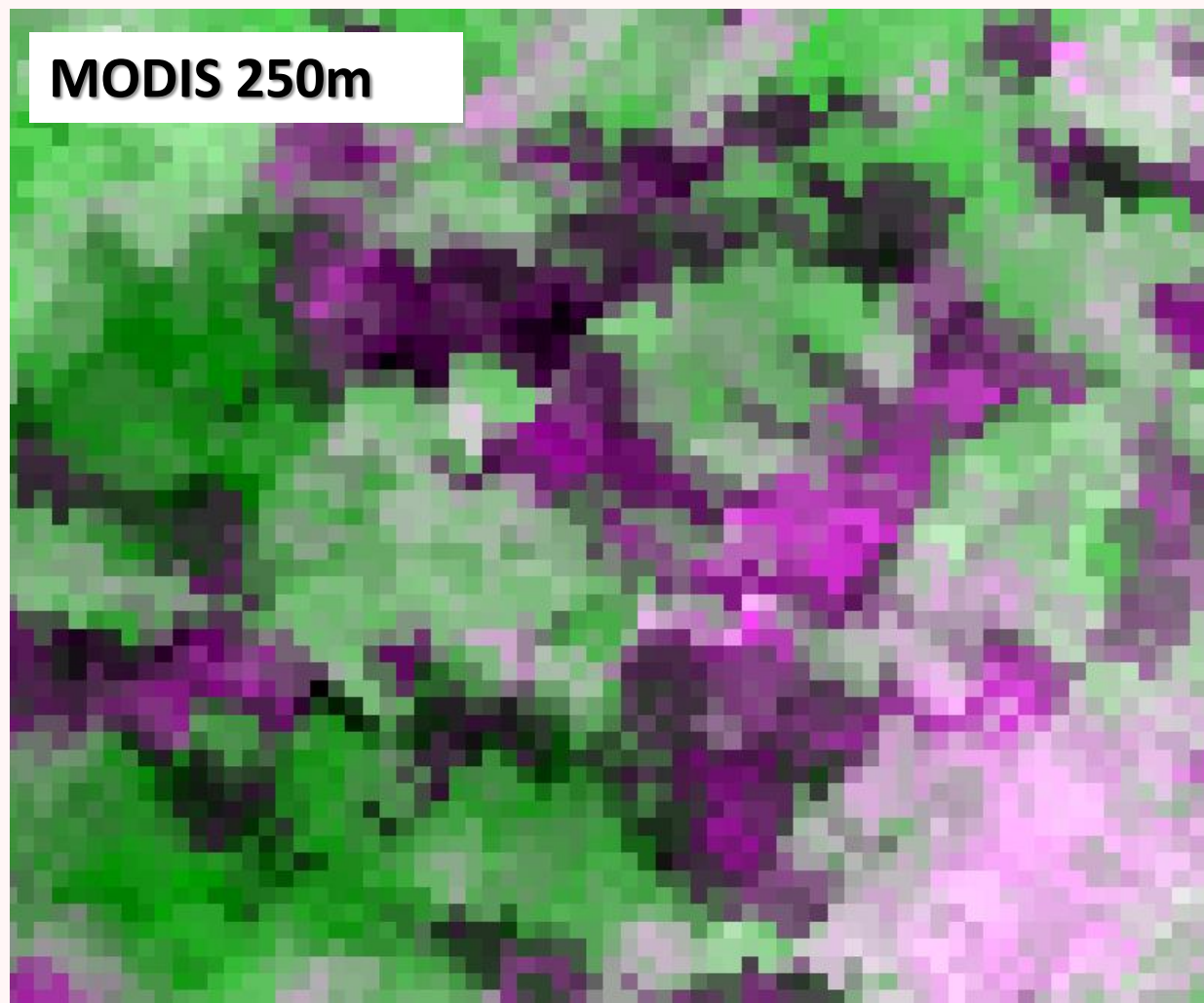
Higher resolution mapping



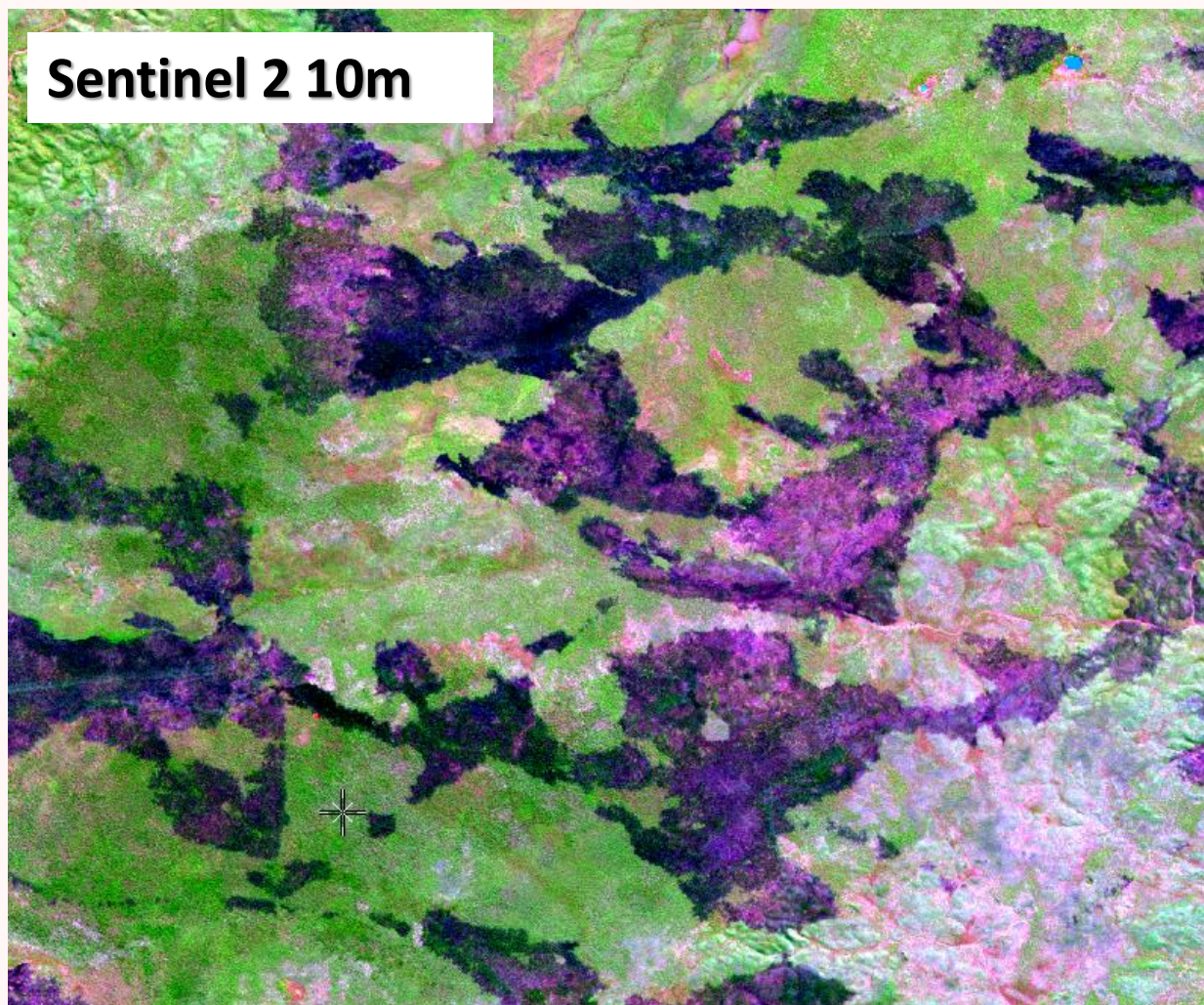
Higher resolution mapping



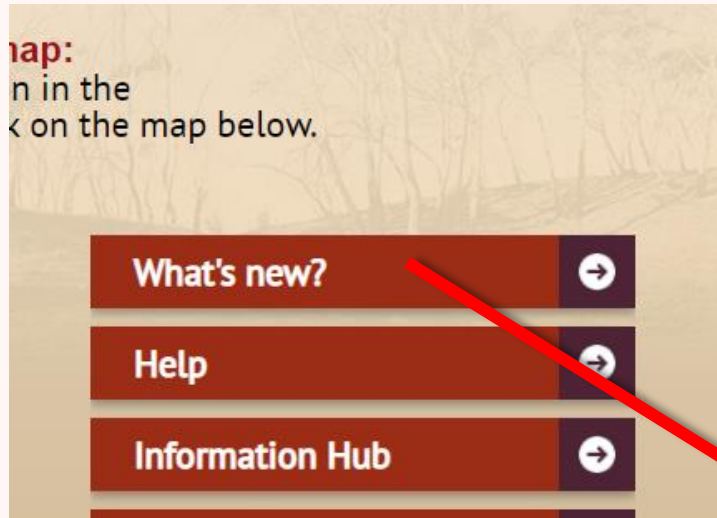
Higher resolution images



Higher resolution images



Higher resolution images



Getting Started (You Tube)

Covers the basics of viewing current fire activity.

[Watch Video](#)

Tracking Fires (You Tube)

Covers the basics of tracking an active fire on NAFL.

[Watch Video](#)

Downloading fire scars (You Tube)

Covers the basics of downloading fire scar data from NAFL.

[Watch Video](#)

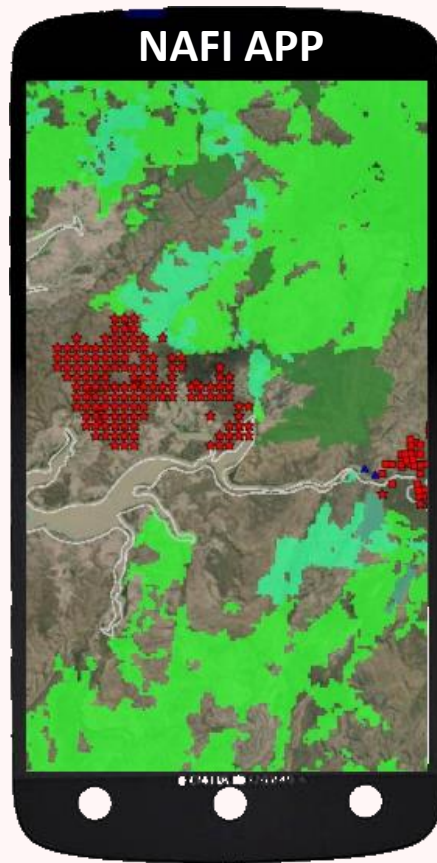
Using Sentinel Fire Scar Imagery (You Tube)

Covers the basics of downloading and using Sentinel fire scar imagery from NAFL.

[Watch Video](#)

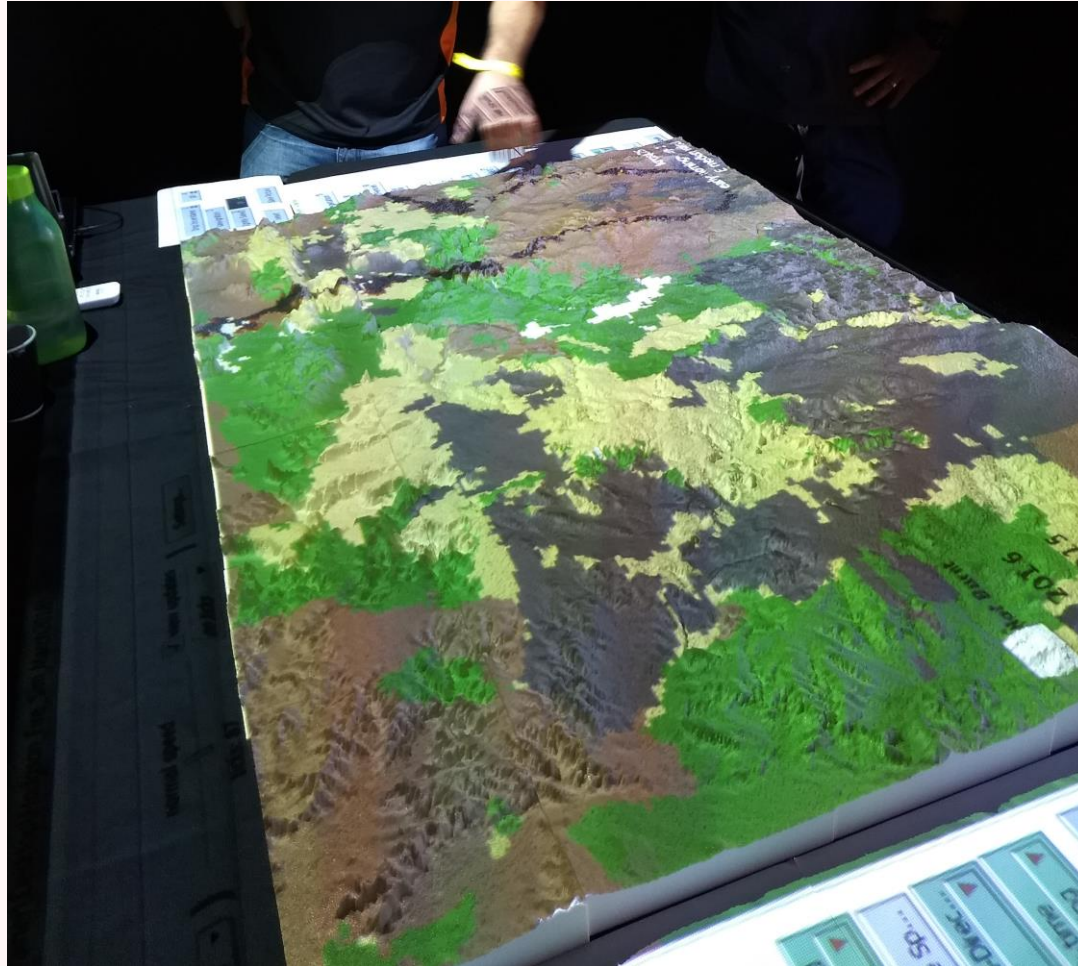
Video demonstration viewing Sentinel 2 imagery with NAFL
Hotspots on *Google Earth*: <https://youtu.be/smlJqixXcLA>

Improving access



Training, Education, Planning & Reporting

Using NAFL on a mobile phone



Training, Education, Planning & Reporting

Using NAFL on a mobile phone

