

PORMPURAAW SAVANNA BURNING

PORMPURAAW RANGERS – CLINTON HOLROYD & GLEN SIMPSON





THE PROJECT IS RUN OUT OF THE PORMPURA AW RANGER BASE

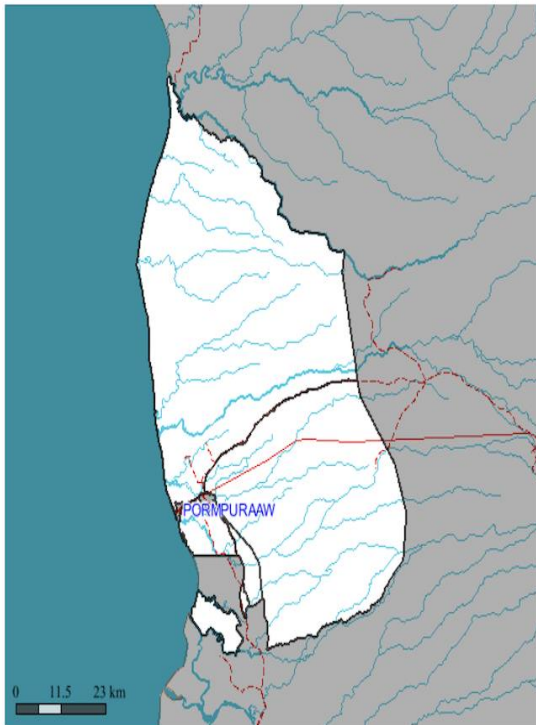
FIRST SAVANNA BURNING PROJECT REGISTERED ON CAPE YORK PENINSULA IN 2013

OVER 75,000 CARBON CREDITS PRODUCED (NOT INCLUDING 2019)

SKILLS DEVELOPED IN FIRE MANAGEMENT INCLUDING AERIAL INCENDIARY

Location Map for Pompuraaw

Pompuraaw encompasses an area of 4206.52 sq km extending from 14 deg 10.0 min to 15 deg 8.0 min S and 141 deg 31.0 min to 142 deg 8.0 min E. Reports are based on data recorded from the highlighted area.



PORMPURAAW IS LOCATED ON THE WESTERN SIDE OF CYP

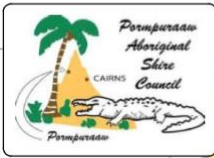
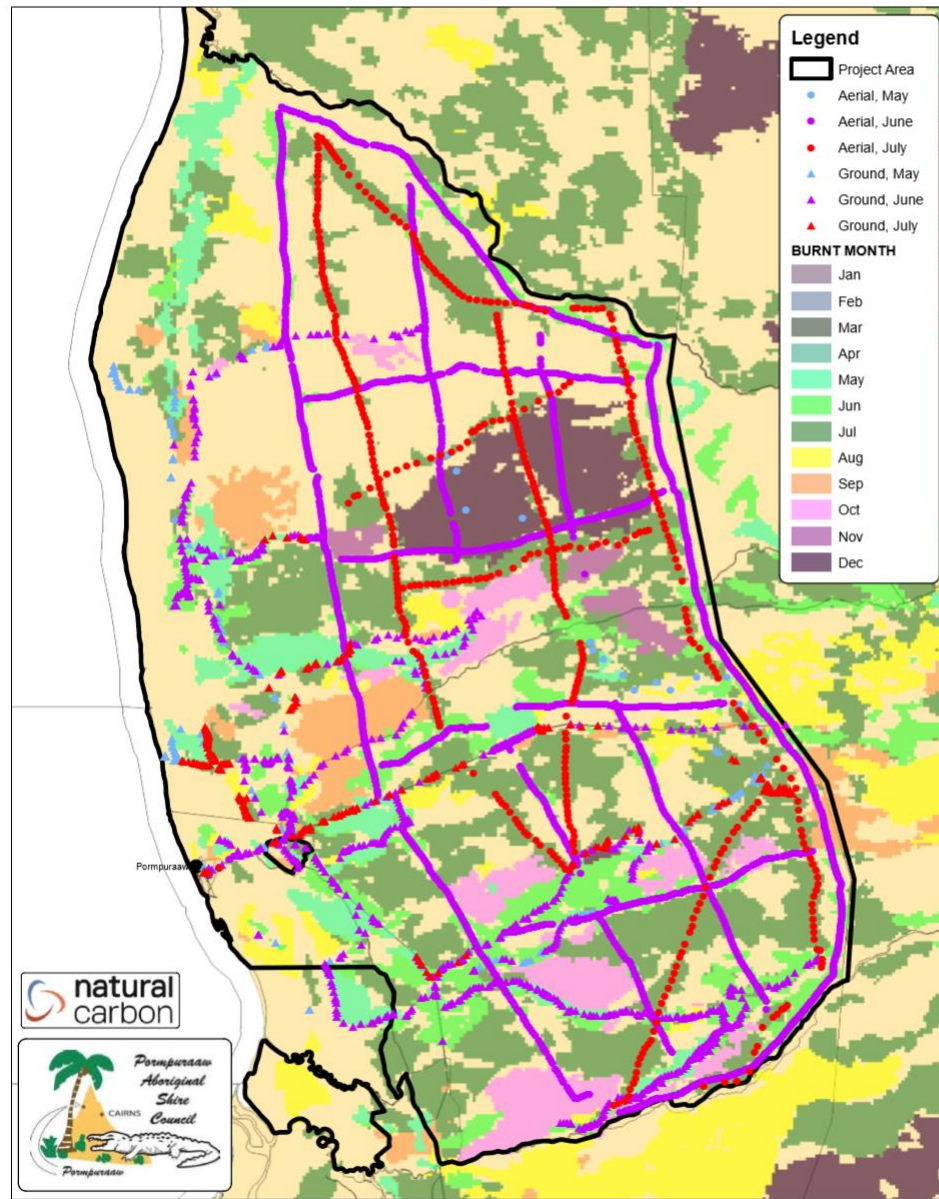
- RANGERS ALSO DO TURTLE MONITORING, FERAL ANIMAL CONTROL, PEST & WEEDS, GHOST NETS, BIOSECURITY COASTAL SURVEILLANCE & JUNIOR RANGER ACTIVITIES
- MANY OTHER ACTIVITIES

-
- 3 RANGER STAFF ARE QUALIFIED SHOOTERS (AERIAL PLATFORM)
 - UPGRADED FIRE GEAR INCLUDING SIDE-BY-SIDES

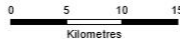
OUR FIRE PROGRAM HAS HAD THE FOLLOWING BENEFITS:

- WE HAVE SEEN MORE GREY KANGAROOS, EMUS, BLUE-TONGUE & FRILL-NECK LIZARDS
 - A LOT LESS LATE SEASON WILDFIRES
 - WE HAVE A BRAND NEW RANGER BASE & HAVE INSTALLED INFRASTRUCTURE ON HOMELANDS
-





PORMPURAAW 2019 BURN RESULTS



aidan@fnqspatial.com
Compiled by: AJ
Date: 23/10/2020

This drawing is considered a sketch only.
The data may come from a variety of sources.
The accuracy of externally sourced data may not
have been checked by FNQ Spatial Data Services.